

Installing GoldMine over an Evaluation Version

Copyright © 2004 FrontRange Solutions Inc.

Department: **Technical Support**

Created: **February 14, 2004**

Last Updated: **March 3, 2004**

Copyright

Copyright © 2004 FrontRange Solutions Inc. All Rights Reserved. GoldMine,, HEAT and other FrontRange products and brands are registered trademarks or trademarks of FrontRange Solutions Inc. in the U.S. and/or other countries. Other products and brands are registered trademarks or trademarks of their respective owners/companies.

USE OF THE SOFTWARE DESCRIBED IN THIS PAPER AND ITS RELATED USER DOCUMENTATION ARE SUBJECT TO THE TERMS AND CONDITIONS OF THE APPLICABLE END-USER LICENSE AGREEMENT (EULA).

The information contained in this document is provided “as is” without warranty of any kind. To the maximum extent permitted by applicable law, FrontRange Solutions disclaims all warranties, either express or implied, including the warranties for merchantability and fitness for a particular purpose; and in no event shall FrontRange Solutions or its suppliers be liable for any damages whatsoever including direct, indirect, incidental, consequential, loss of business profits or special damages, even if advised of the possibility of such damages.

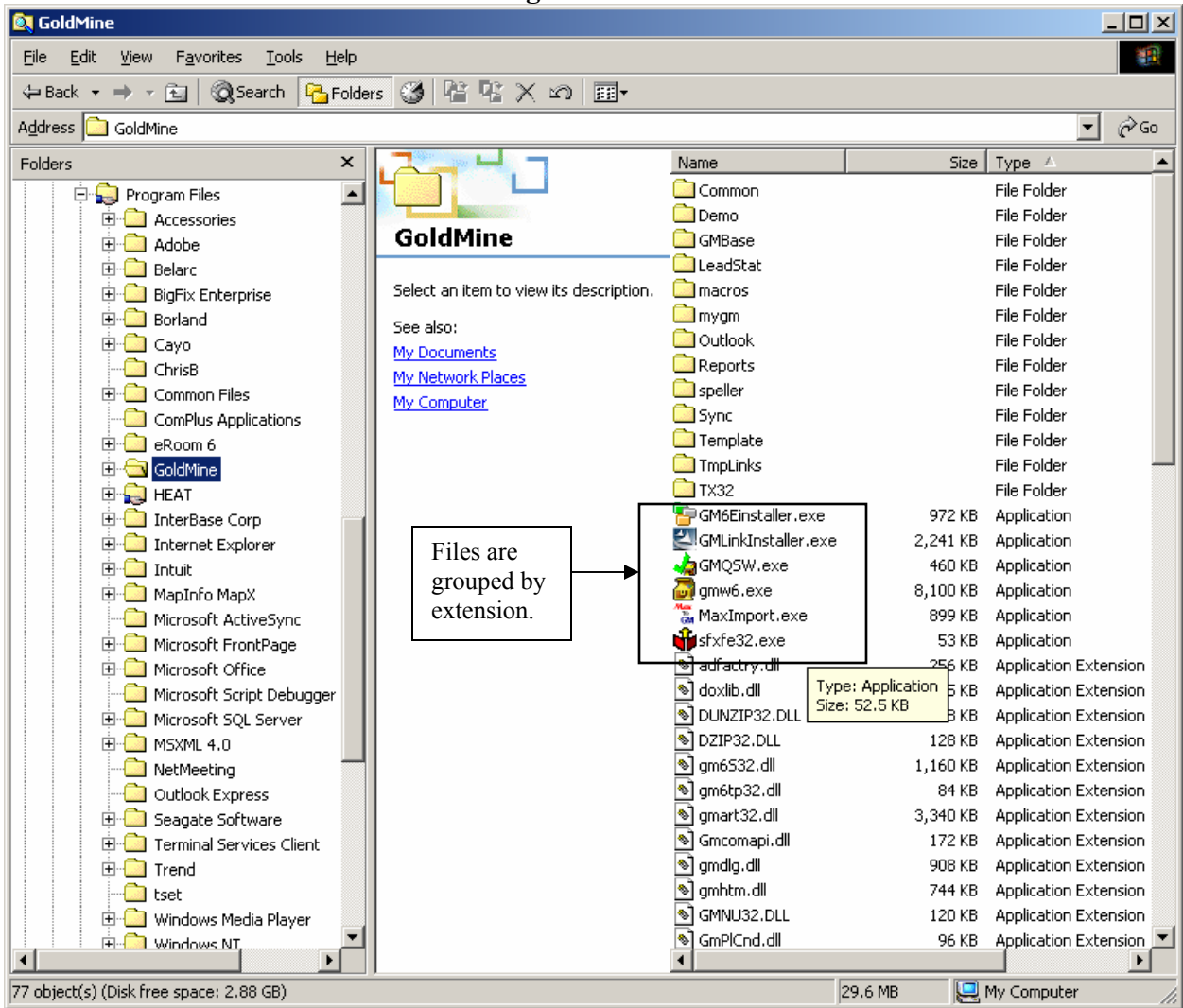
Installing GoldMine over an Evaluation Version

Overview

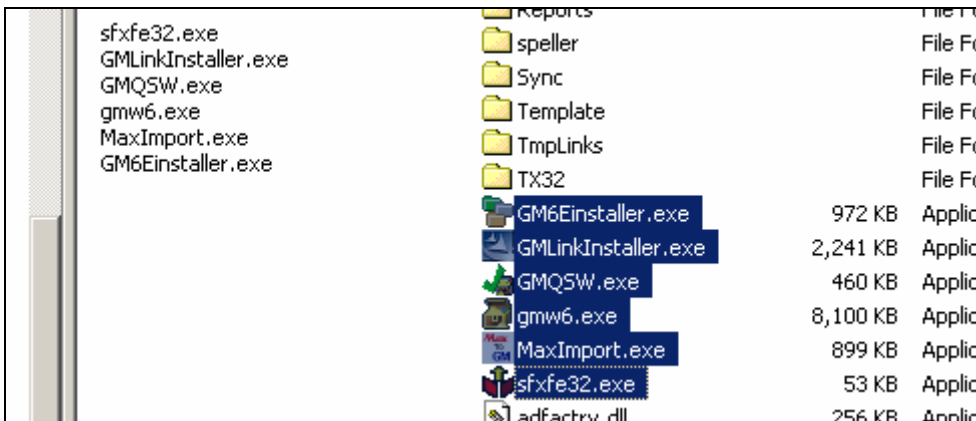
If an evaluation version of GoldMine contains data that should be preserved after the installation of a purchased copy of the application, the steps detailed below will accomplish this.

1. **Make a complete backup of the evaluation version of GoldMine. Do not proceed until a backup has been done.**
 - The simplest way to backup GoldMine is to browse to the GoldMine directory (typically found in C:\Program Files), right click on the folder, select Copy. Browse to another location on the hard drive (the Desktop is fine or you can create a new folder named something like “GMBackup”) and paste the copied folder using Edit>>Paste.
 - If the evaluation version was installed to a different location, use the correct location for the backup.
 - You can determine the location of your GoldMine files by going to Help>>About>>System when logged into GoldMine and taking note of the locations for your System Files, GoldMine Files and Contact Files.
 - If you are running Windows XP as your operating system, please see the notes below for backup instructions.
2. Using Windows Explorer, **browse to the GoldMine directory** and open it. (The default location for this is C:\Program Files\GoldMine.
3. Click **View>>Arrange Icons>>by Type**. This will arrange all icons by the extension of the file so that all .exe files are grouped together, all .dll files are grouped together, etc. as shown in Figure 1 on the next page.

Figure 1



4. Highlight all of the .exe files. Right click on one and select Delete.



Tip:
To highlight multiple files, hold down the CTRL key and then click each file. To highlight a continuous list, click the first in the list, hold down SHIFT and then click the last in the list.

5. Highlight all of the .dll files. Right click on one and select Delete.
6. Right click on the License.dbf file and select Delete.
7. Right click on the Flags.dbf file and select Delete.
8. Close the window.
9. Install the purchased copy of GoldMine using the same directory that currently holds the evaluation version.
10. Once you have verified that your existing data is viewable in the newly installed GoldMine, it is strongly recommended you immediately make a backup. Routine backup procedures should then be instituted to protect your data.

Notes regarding Windows XP operating system:

1. When installing GoldMine to an XP Operating System, the files will be split into 2 separate locations. In most cases these are:
 - C:\Program Files\Goldmine is the location of your system files
 - C:\Documents and Settings\All Users\Application Data\GoldMine will be the location of your database files.
2. Make a copy of the GoldMine folder from each location and paste to your desktop. Name one GMSystemFiles and the other GMDatabaseFiles.
3. Proceed with step 2 above.