

Reinstalling the BDE with GoldMine

Copyright © 2004 FrontRange Solutions, Inc.

Author: Tshering Pelden
Department: Technical Support
Created: July 28, 2004
Last Updated: July 28, 2004

Copyright

Copyright © 2004 FrontRange Solutions Inc. All Rights Reserved. GoldMine, HEAT, and other FrontRange products and brands are registered trademarks or trademarks of FrontRange Solutions Inc. in the U.S. and/or other countries. Other products and brands are registered trademarks or trademarks of their respective owners/companies.

USE OF THE SOFTWARE DESCRIBED IN THIS PAPER AND ITS RELATED USER DOCUMENTATION ARE SUBJECT TO THE TERMS AND CONDITIONS OF THE APPLICABLE END-USER LICENSE AGREEMENT (EULA).

The information contained in this document is provided “as is” without warranty of any kind. To the maximum extent permitted by applicable law, FrontRange Solutions disclaims all warranties, either express or implied, including the warranties for merchantability and fitness for a particular purpose; and in no event shall FrontRange Solutions or its suppliers be liable for any damages whatsoever including direct, indirect, incidental, consequential, loss of business profits or special damages, even if advised of the possibility of such damages.

Table of Contents

COPYRIGHT 2

REINSTALLING THE BORLAND DATABASE ENGINE 4

THE BDE 4

AUDIENCE FOR THIS TECHNICAL DOCUMENT 4

BDE VERSIONS SUPPORTED WITH GOLDMINE 4

WHEN TO REINSTALL BDE..... 4

 Due to an Error Message..... 4

 With Recommendation 5

DIRECTIONS FOR REINSTALLING THE BORLAND DATABASE ENGINE 5

ADDITIONAL RESOURCES ON THE BORLAND DATABASE ENGINE 10

 From the FrontRange Solutions Inc. Website: 10

 Borland®..... 10

Reinstalling the Borland Database Engine

The BDE

The Borland Database Engine (BDE) designed by Borland is publicly available for developers to use for accessing data stored in several formats with a common set of commands.

The BDE is the communication tool that enables GoldMine to communicate with its database(s).

Audience for This Technical Document

This document is written for customers using the standard version of GoldMine 5.0 or higher. The standard edition of GoldMine runs on a dbase backend.

BDE Versions Supported With GoldMine

| GoldMine Version | BDE Version |
|---|----------------|
| 4.x | 4.51 or higher |
| 5.x | 5.0 or higher |
| GoldMine Sales and Marketing (5.7x) | 5.01 or higher |
| GoldMine Business Contact Manager (6.x) | 5.01 or higher |

When to Reinstall BDE

Described below are situations when users would need to reinstall the BDE

Due to an Error Message

The Borland Database Engine files are by default supposed to go into the following location:
Drive letter: \GoldMine\Setup\BDE

However, often times when installing GoldMine on the server, the BDE gets installed on the local drive (Drive C) of the server in the following path: C:\Program Files\Common Files\Borland Shared\BDE. Thus if the BDE folder here is not shared out, then workstations could come up with the following message when you try to launch GoldMine using the shortcut to the executable file,

“GoldMine cannot dynamically load the functions of idapi32.dll...”

To resolve the problem, you have two options:

1. Reinstall the Borland Database Engine on the workstation

2. Share the Borland Shared folder fully and when you receive the message on the workstations, browse to the idapi32.dll file located in BDE folder that's within the Borland Shared folder.

With Recommendation

If a GoldMine Certified Technician at FrontRange Solutions Inc. or if a GoldMine Certified partner recommends that you reinstall GoldMine, you may follow this document. However, please verify with them if you can use this document.

Directions for Reinstalling the Borland Database Engine

Important! Please remember to make a backup of your GoldMine databases before you follow the procedure below.

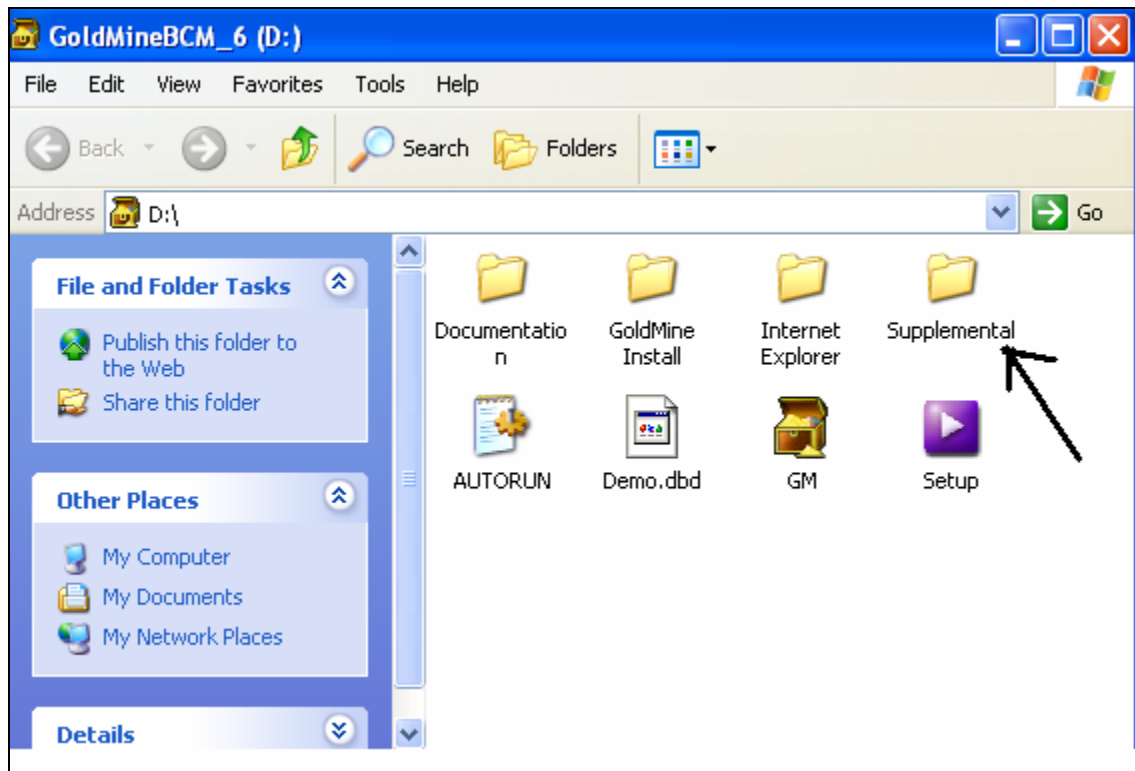
1. Put the installation CD in the CD-Rom drive
2. The Install Shield for GoldMine will launch (as appears below)



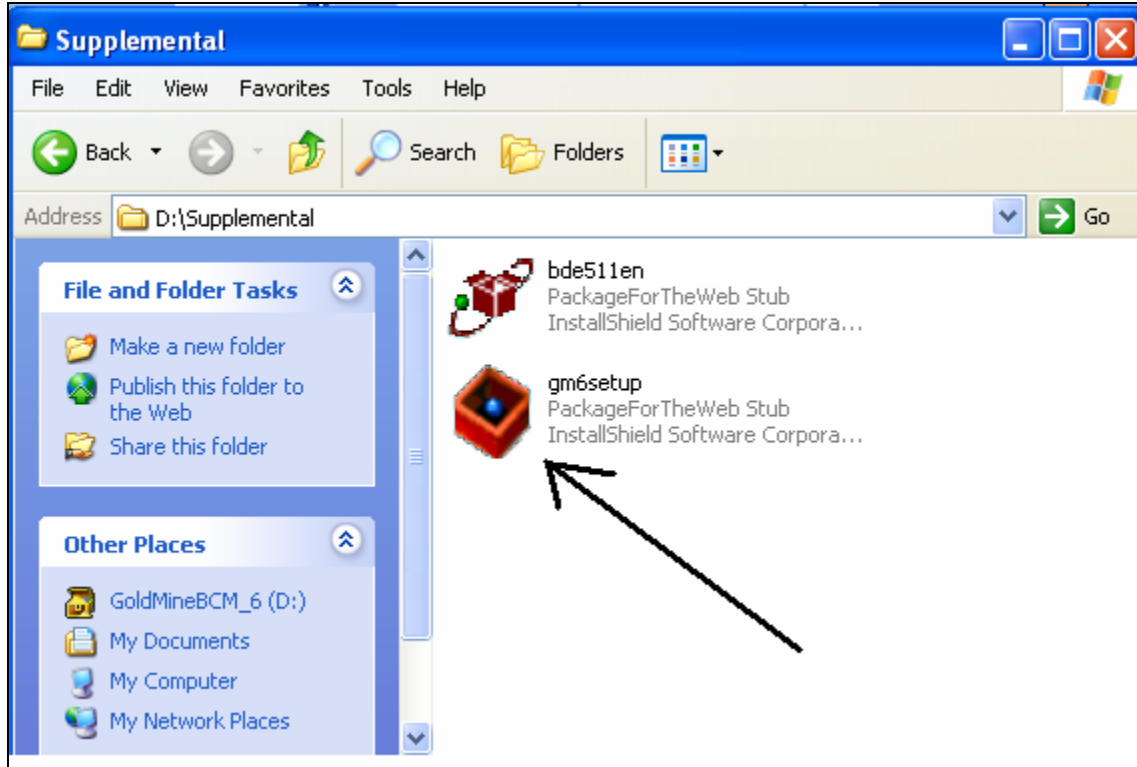
3. Click on *Browse CD*



4. Click on the *Supplemental* folder



5. Run the *gm6setup.exe* file by double-clicking on it



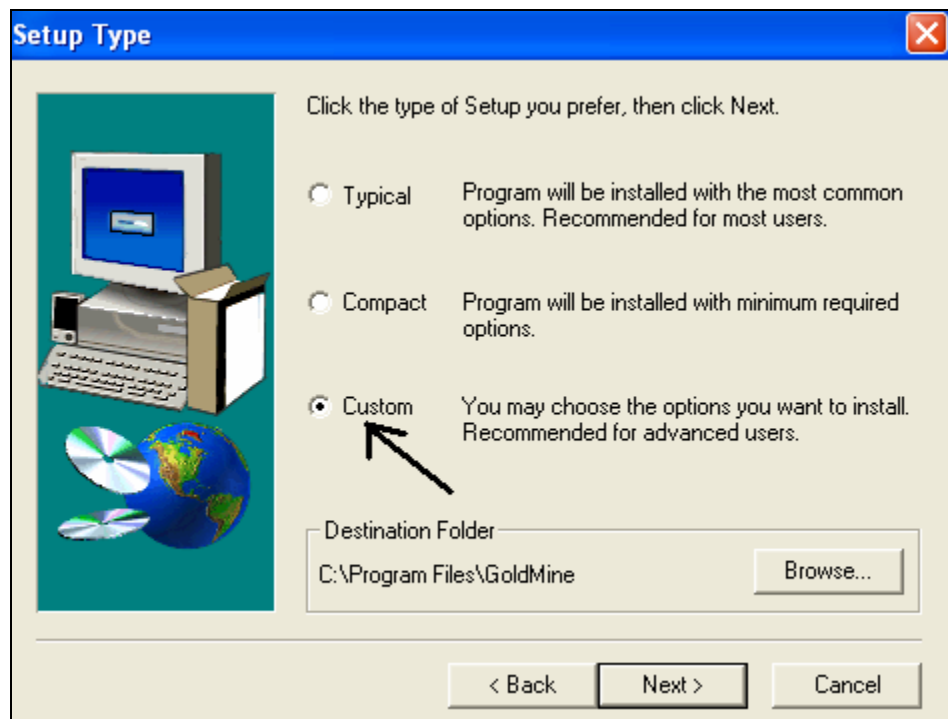
6. On the Welcome to GoldMine 6.0 Setup! screen, click on the **Next** button.



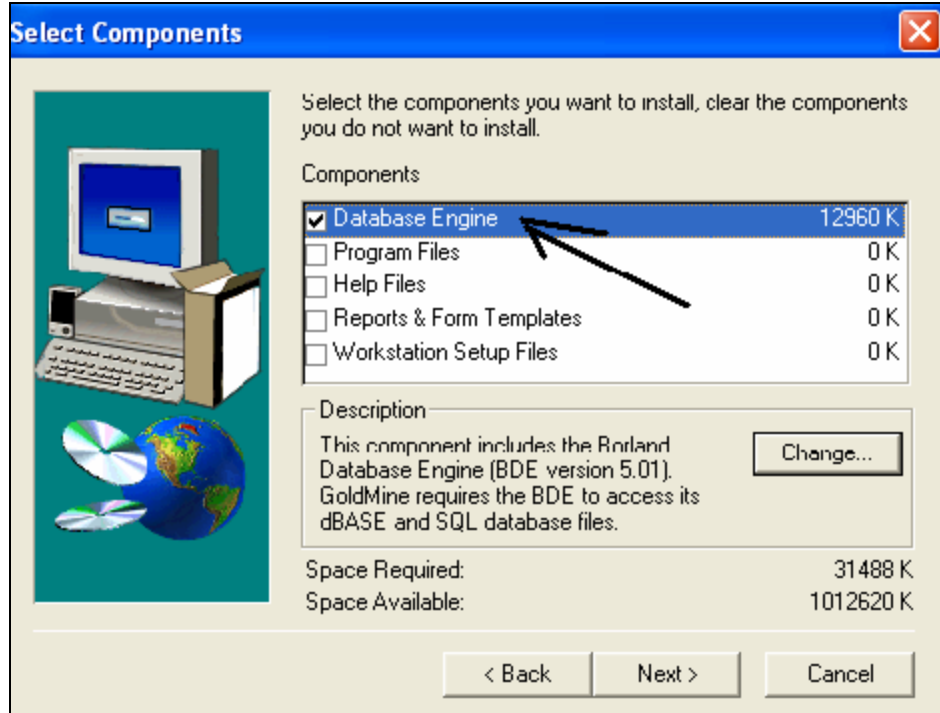
7. View the License Agreement. Click on the **Yes** button to proceed.



8. Select the *Custom* radio button for the type of install and click on the **Next** button



9. From the list below, select **ONLY the Database Engine** and click on the **Next** button



10. After the installation completes, log into GoldMine



Additional Resources on the Borland Database Engine

Below are some links that may be useful to you.

From the FrontRange Solutions Inc. Website:

Document 500: *The Borland Database Engine with GoldMine*

To locate the document, please visit: <http://support.frontrange.com> . In the navigation pane on the left, click on Customer Support >>Online Support>>Technical Documents

To search our online knowledge base: <http://support.frontrange.com>

To locate a certified FrontRange Solutions Partner in your area:

<http://frontrange.com/purchase/partnersearch.asp>

To get information on our educational offerings:

http://frontrange.com/services/education_services.asp

Borland®

Homepage for Borland: <http://www.borland.com>

To contact Borland® support: <http://support.borland.com/>